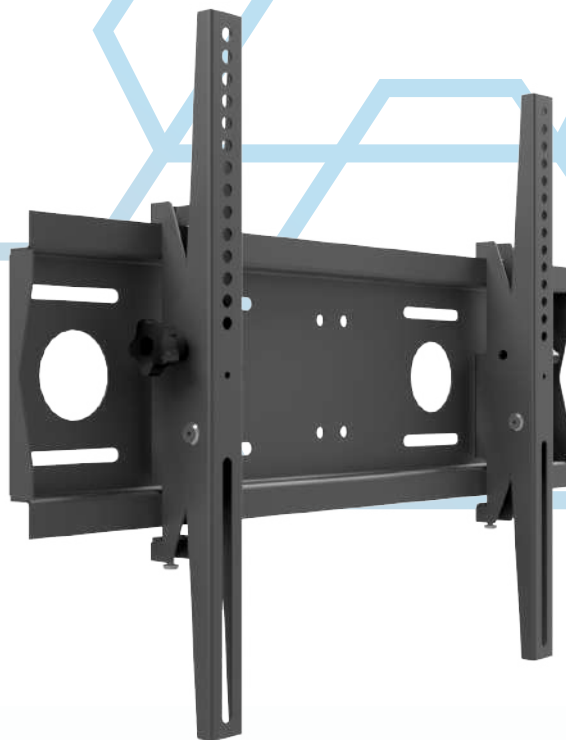


# PWB2

## UNIVERSAL TILT WALL MOUNT

FOR 40"-75" SCREENS

Designed for the installation of medium-sized screens. PWB2 is a robust, tilting wall mount that provides extraordinary functionality with its minimalist design. The ease of installation makes it very simple to use on all types of wall surfaces. Screen protection against falling, robust finish and, at the same time, modern design allow the use of PWB2 in conference rooms, waiting rooms or public areas.



### FEATURES

- Robust design to ensure load capacity up to 80 kg
- Screen protection against falling
- Screen mounting screws included
- Simple and quick installation
- Lateral adjustment of the screen once mounted on the wall plate
- Suitable for installation on brick, concrete, plaster and wooden walls
- Minimalist design and functionality
- Modern design

### PRODUCT SPECIFICATIONS

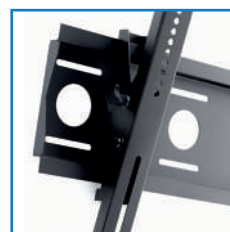
Short index	PWB2
Product group	Display Mounts
Category	Tilt Wall Mounts
Colour	Black
Warranty	Limited 5-years
Number of screens	1
Minimum screen size	40"
Maximum screen size	75"
Maximum load	80 kg
Forward tilting	-12°/+6°
VESA Mounting Compatibility	100×100 up to 600×400



Robust design to ensure load capacity up to 80 kg

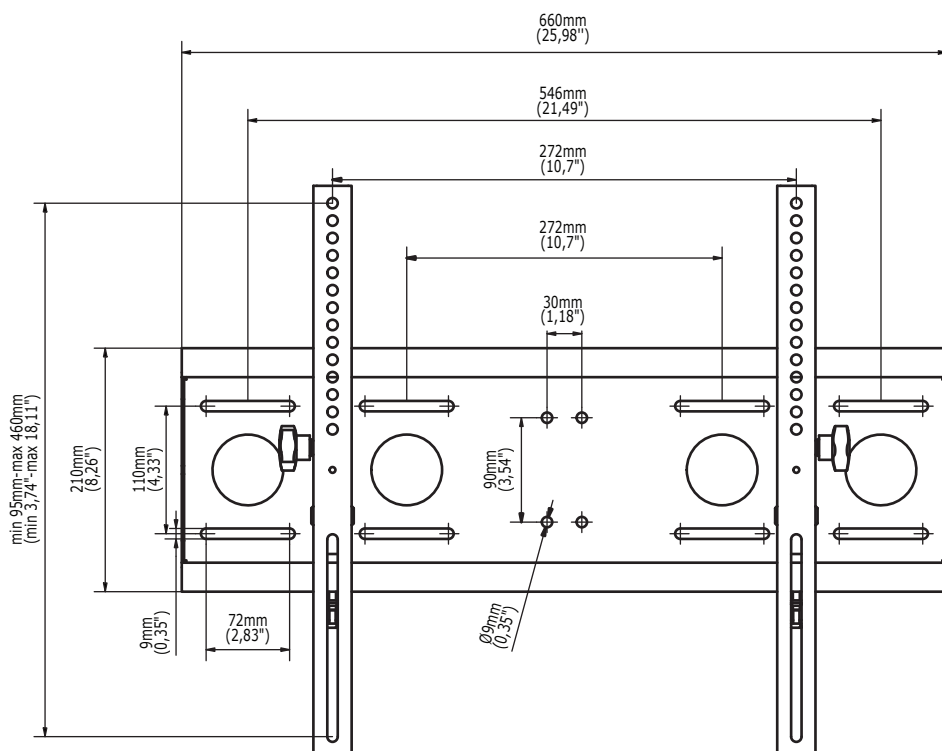


Screen protection against falling

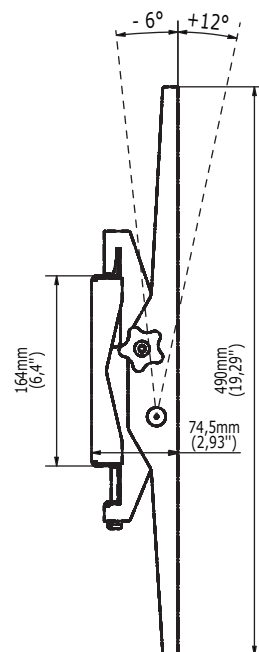


Screen tilt adjustment

FRONT VIEW



SIDE VIEW



## TECHNICAL SPECIFICATIONS

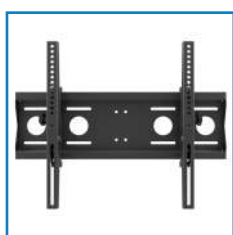
Product dimensions	W: 660 mm D: 74,5 mm H: 490 mm (W:25,98" D:2,93" H:19,29")
Product weight	5,2 kg (11 lb)
Max. distance from mounting surface	74,5 mm (2,93")
Min. distance from mounting surface	74,5 mm (2,93")
Max. mounting pattern	620 mm x 460 mm
Min. mounting pattern	50 mm x 95 mm

## LOGISTICS DATA

SAP INDEX	EAN CODE	COLOUR	PACKAGE DIMENSIONS	PACKAGE WEIGHT
WUSC-PWB2	5902841103672	BLACK	830 x 220 x 80 mm 32,68 x 8,66 x 3,15"	5,5 kg 12 lb

HS Code (Harmonized System): 732690, HTS Code (Harmonized Tariff Schedule): 7326909890, Country of Origin: Poland

## ACCESSORIES AND RELATED PRODUCTS



PWB1



TWB1



TWB2



EWB250